



Pollution Incident Response Management Plan

Please address all correspondence to the General Manager

P O Box 115 Narromine NSW 2821

T: 02 6889 9999 F: 02 6889 9998

E: mail@narromine.nsw.gov.au

W: www.narromine.nsw.gov.au

Office Address: 124 Dandaloo Street Narromine NSW 2821

ABN 99 352 328 405

(Blank Page)

Table of Contents

1.0 PURPOSE OF THE POLLUTION INCIDENT RESPONSE MANAGEMENT PLAN	4
2.0 POLLUTION INCIDENT CLASSIFICATION, RISK ASSESSMENT AND CONTRIBUTING FACTORS	5
3.0 DOCUMENT A - POLLUTION INCIDENT DECISION FLOW CHART	7
4.0 DOCUMENT B – POLLUTION INCIDENT EMERGENCY CONTACT DETAILS	8
4.1 DEFINITION OF POLLUTION INCIDENT.....	8
4.2 NOTIFICATION OF POLLUTION INCIDENT.....	8
4.2.1 NOTIFICATION SPEED OF RESPONSE.....	8
4.2.2 NOTIFICATION OF RELEVANT AUTHORITIES	8
4.2.3 CONTACT DETAILS OF RELEVANT AUTHORITIES.....	9
5.0 COMMUNICATING WITH NEIGHBOURS AND THE COMMUNITY	10
6.0 POLLUTION INCIDENT REPORTING FORM.....	11
TABLES	

Table 2.1 – Pollution Incident Classification, Risk Assessment and Contributing Factors

1.0 PURPOSE OF THE POLLUTION INCIDENT RESPONSE MANAGEMENT PLAN

Narromine Shire Council (“Council”) has prepared a Pollution Incident Response Management Plan (PIRMP) for Narromine Waste Management Facility, located on Gainsborough Road Narromine.

The PIRMP contains details of site specific actions that Council have or will, (when required as a result of an incident), put in place to improve the way pollution incidents are reported, managed and communicated to the general community.

These actions meet the environmental requirements introduced by the Protection of the Environment Legislation Amendment Act 2011 and the Protection of the Environment Operations (General) Amendment (Pollution Incident Response Management Plan) Regulation, 2012.

The objectives of the PIRMP are to:

- Ensure that effective communication channels are in place to inform relevant authorities and the community (if required) of a notifiable incident.
- Control and minimise the impact of an incident using the Pollution Incident Response Management Plan (PIRMP)
- Review, update and test the PIRMP by carrying out exercises at prescribed intervals.

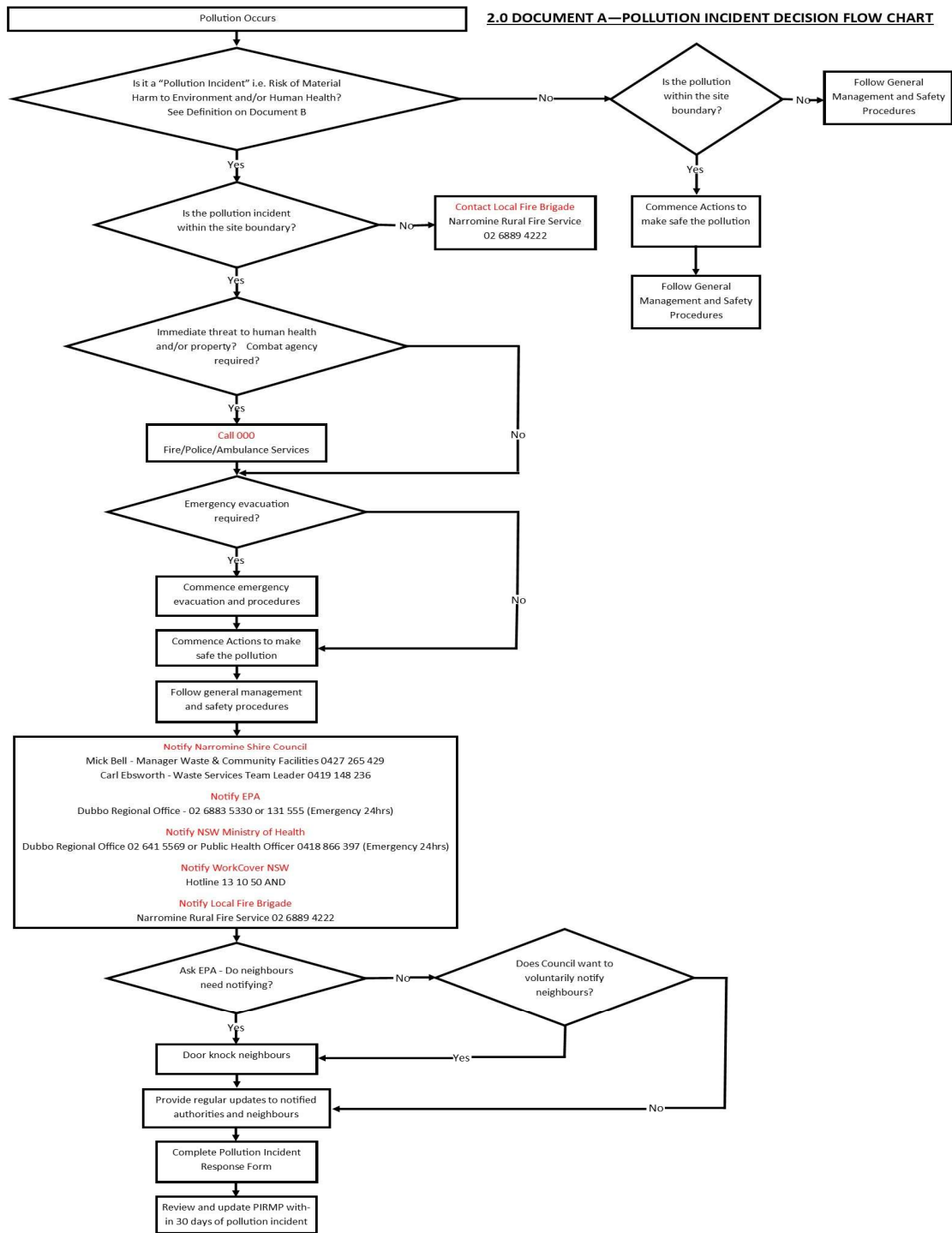
2.0 POLLUTION INCIDENT CLASSIFICATION, RISK ASSESSMENT AND CONTRIBUTING FACTORS

Table 2.1 – Pollution Incident Classification, Risk Assessment and Contributing Factors

Description of Pollution Incident	Likelihood	Impact	Contributing Factors
Identifying non-domestic quantities (more than 200 millimetres per tonne or 200 grams per tonne) of hazardous substances among waste	Medium	Low	Human errors made during waste screening
Surface or subsurface fires at active landfill, public receival areas & recycling facility	Medium	Medium	High winds, dry weather, prolonged high temps and low humidity. Human errors made during waste screening, poor maintenance of plant and equipment, spontaneous combustion, hot embers in waste deliveries.
Surface or subsurface fires at maintenance and inactive areas	Low	High	High winds, dry weather, prolonged high temps, low humidity and spontaneous combustion.
Mixing of leachate and stormwater or waste and stormwater	Low	Medium	Prolonged periods of heavy rain, & lack of surface water pond and site maintenance.
Identification of any failure of an environmental protection system	Low	Low	Prolonged periods of heavy rain and/or a mechanical failure of the pump at the leachate pond.
Identification of a significant difference in groundwater indicator parameters	Low	Low	Prolonged periods of heavy rain
Confirmation of subsurface gas migration in a perimeter gas well at greater than 1.25 per cent methane (volume for volume)	Low	Low	n/a
Confirmation of surface gas at the landfill at greater than 1.25 per cent methane (volume for volume)	Low	Low	n/a

Confirmation of gas accumulated in buildings at greater than 1.25 per cent methane (volume for volume)	Low	Low	On-site buildings which have not been designed to prevent accumulation of methane gas.
Description of Pollution Incident	Likelihood	Impact	Contributing Factors
Any other incident or observation That could potentially pose an immediate environmental hazard outside normal operating conditions	Low	Low	n/a
Acts of vandalism or target of terrorist activity	Low	Medium	Increased risk during hours of closure

3.0 DOCUMENT A – POLLUTION INCIDENT DECISION FLOW CHART



4.0 DOCUMENT B – POLLUTION INCIDENT EMERGENCY CONTACT DETAILS

4.1 DEFINITION OF POLLUTION INCIDENT

A pollution incident is required to be notified if there is a risk of 'material harm to the environment', which is defined in section 147 of the POEO Act:

“(a) harm to the environment is material if:

- i) it involves actual or potential harm to the health or safety of human beings or to ecosystems that is not trivial, or*
- ii) it results in actual or potential loss or property damage of an amount, or amounts in aggregate, exceeding \$10,000, and*

(b) loss includes the reasonable costs and expenses that would be incurred in taking all reasonable and practicable measures to prevent, mitigate or make good harm to the environment.”

4.2 NOTIFICATION OF POLLUTION INCIDENT

4.2.1 Notification Speed of Response

The requirement for notification of a pollution incident has changed from a 'soon as practicable' to 'immediately'. In short, 'immediately' means 'promptly without delay', but it does not mean undertaking notification ahead of doing what is necessary to make safe.

4.2.2 Notification of Relevant Authorities

Where the pollution incident causes or threatens material harm to the environment or human health, all the following authorities must be notified by the Narromine Landfill Supervisor, or the person acting in this position.

4.2.3 Contact details of Relevant Authorities

1. Emergency Call Services

- **Emergency Hotline Number (24 hours)** **000***

*The Narromine Landfill Supervisor should call 000 if the incident presents an immediate threat to human health and/or property and a combat agency is required (i.e. NSW Fire and Rescue, NSW Ambulance Service, NSW Police Force) and then notify all other parties below including NSW Fire and Rescue via a local telephone number.

2. Narromine Shire Council

- Mick Bell, Manager Waste & Community Facilities, NSC
0427 265 429
- Carl Ebsworth, Team Leader Waste Services, NSC
0419 148 236
- Andre Pretorius, Director Infrastructure & Engineering Services, NSC
0428 272 990

3. The Environment Protection Authority (EPA)

- Dubbo Regional Office
02 6883 5330
- Emergency Hotline Number (24 hours)
131 555

4. NSW Ministry of Health (via Public Health Units)

- Dubbo Regional Office
02 6841 2260
- Public Health Officer On Call (24 hours)
0418 866 397

5. Work Cover NSW

- Hotline Number
131 050

6. Fire and Rescue NSW

- Dubbo Rural Fire Service
02 6881 3900**

If there is no immediate threat to human health and/or property i.e. a combat agency is not required, then the Narromine Landfill Supervisor is still required to follow that outlined above except for dialing 000.

5.0 COMMUNICATING WITH NEIGHBOURS AND THE COMMUNITY

The following mechanisms appropriate to the circumstances may be adopted to notify and update surrounding community of an incident, and would be undertaken following consultation with the relevant combat agencies and specialist advice:

- Telephone calls or door knocking (where appropriate);
- Local media sources and media releases; and
- Council webpage and social media updates

6.0 POLLUTION INCIDENT REPORTING FORM

INCIDENT
NO:

TIME:

DATE:

DURATION OF
INCIDENT:

NATURE OF INCIDENT:

.....

.....

.....

.....

TEMPERATURE:oC WIND DIRECTION/SPEED:KM/HR

RELATIVE HUMIDITY:% RAINFALL SINCE 9AM:MM

FIRE DANGER RATING:

THE LOCATION OF THE PLACE WHERE POLLUTION IS OCCURRING OR IS LIKELY TO OCCUR:

.....

.....

.....

.....

THE NATURE, THE ESTIMATED QUANTITY OR VOLUME AND THE CONCENTRATION OF ANY POLLUTANTS INVOLVED (IF KNOWN):

.....

.....

.....

.....

THE CIRCUMSTANCES IN WHICH THE INCIDENT OCCURRED, INCLUDING THE CAUSE OF THE INCIDENT (IF KNOWN):

.....

.....

.....

.....

THE CORRECTIVE ACTION TAKEN OR PROPOSED TO BE TAKEN TO DEAL WITH THE INCIDENT AND ANY RESULTING POLLUTION OR THREATENED POLLUTION (IF KNOWN):

.....

.....

.....

.....

.....

.....

HAS COUNCIL BEEN NOTIFIED?	YES	NO
HAS ENVIRONMENTAL PROTECTION AUTHORITY (EPA) BEEN NOTIFIED?	YES	NO
HAS NSW MINISTRY OF HEALTH (VIA PUBLIC HEALTH UNITS) BEEN NOTIFIED?	YES	NO
HAS WORKCOVER NSW BEEN NOTIFIED?	YES	NO
HAS LOCAL FIRE AND RESCUE NSW BEEN NOTIFIED?	YES	NO
HAS EPA DIRECTED COUNCIL TO NOTIFY NEIGHBOURS?	YES	NO
IF NOT, HAS COUNCIL VOLUNTARARILY NOTIFIED NEIGHBOURS?	YES	NO

SIGNATURE: DATE:

SIGNATURE: DATE:

DIRECTOR INFRASTRUCTURE & ENGINEERING SERVICES

(Blank Page)